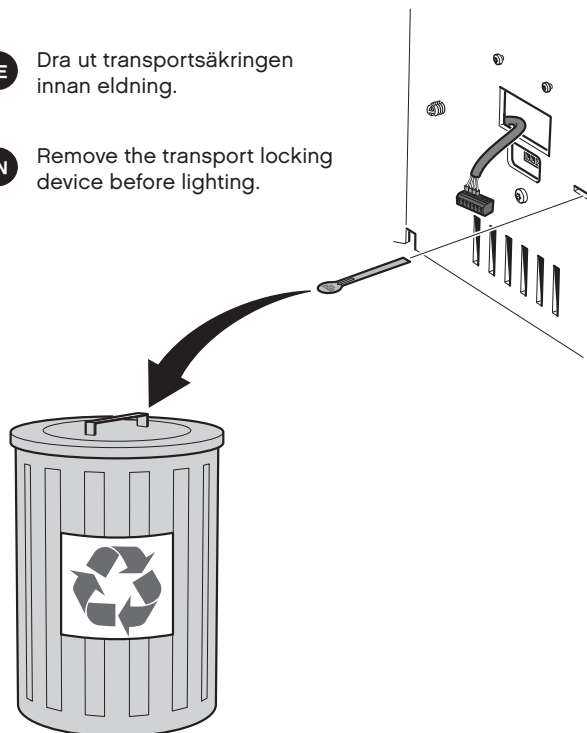




SE Dra ut transportsäkringen innan eldning.

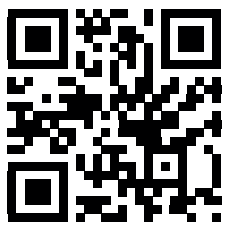
EN Remove the transport locking device before lighting.



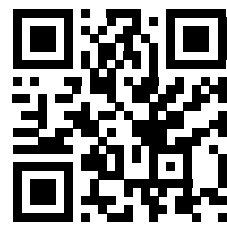
SE Uppdatera kaminens mjukvara innan första eldning!
Skanna QR-kod för att komma till anvisningen.

EN Update the stoves firmware before first lighting!
Scan the QR-code to read user instructions.

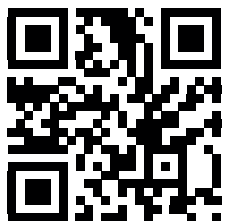
SE



EN



DE



FR

