

| | | |
|-----------|-------------------------|----|
| SE | Eldningsinstruktion | 4 |
| DE | Heizinstruktionen | 11 |
| FR | Instructions d'allumage | 18 |
| NL | Stookinstructies | 25 |
| NO | Fyringsinstruksjon | 32 |
| DK | Fyringsvejledning | 39 |
| FI | Lämmitysohjeet | 46 |
| EN | Lighting Instruction | 53 |

Contura

Connect 510

Connect 556

Connect 596



SE

SÄKERHETSINFORMATION

Produkten kan användas av personer från 8 år och av personer med nedsatt fysisk, sensorisk eller mental förmåga eller brist på erfarenhet eller kunskap om de har fått övervakning eller anvisningar gällande användning av produkten på säkert sätt och förstår föreliggande risker. Barn ska hållas under uppsikt så att de inte leker med produkten. Låt inte barn rengöra eller underhålla produkten utan övervakning.

Använd produkten endast med medföljande nätadapter. Kontakta Contura om nätadaptern behöver bytas.

DATASÄKERHETSINFORMATION

När enheten startas första gången (eller när den startas med fabriksinställda standardvärden), erbjuder den tjänster avsedda att underlätta säker hoppning och inställning med mobiltelefon-app, för att säkerställa såväl enkel användning som hög säkerhet. Gränssnitten och tjänsterna nedan är aktiverade.

WiFi-åtkomstpunkt

WPA2-skydd används för WiFi-åtkomstpunkten, med de inloggningsuppgifter som anges på enhetens dekal eller på den gateway-anslutna enheten. Därigenom säkerställs att endast behöriga användare kan ansluta till enheten.

Hoppningstjänster i appen MyUplink

Enheten visar tjänster för detektering och konfiguration i fabriksinställt läge och i normal drift. Mobiltelefon-appen kommunicerar med enheten via dessa tjänster för att verkställa inställning och konfiguration. All känslig kommunikation är krypterad för att upprätthålla datasäkerhet och integritetsskydd.

Batteriet som medföljer denna produkt innehåller ämnen som är skadliga för miljön.

- Batteriet måste tas ut innan produkten lämnas till avfallshantering.
- Stäng av produkten och dra ut stickproppen innan batteriet tas ut.
- Batteriet får bytas endast av personer med tillräckliga kunskaper.
- Uttjänta batterier ska avfallshandlas i enlighet med gällande regler.

EN

SAFETY INFORMATION

This appliance can be used by children aged from 8 years and above as well as persons with reduced physical, sensory or mental capabilities or lack of experience and knowledge if they have been given supervision or instruction concerning use of the appliance in a safe way and understand the hazards involved. Children shall not play with the appliance. Cleaning or user maintenance shall not be done by children without supervision.

This appliance is to be used only with the power supply provided. If the power supply needs to be replaced, please contact Contura.

CYBERSECURITY INFORMATION

Upon powering on for the first time (or when the device is in factory default state), your device offers services designed to facilitate secure pairing and setup using a mobile application, ensuring both ease of use and security. The following interface and services are enabled:

WiFi Access Point

The WiFi Access Point uses WPA2 protection, with credentials printed on a device sticker or on the device connected to the gateway. This ensures that only authorized users can connect to the device.

MyUplink App pairing services

The device exposes services for discovery and configuration while in factory default state and normal operation. The mobile application communicates with the device through these services for setup and configuration tasks. All sensible communication is encrypted, ensuring data privacy and integrity.

The battery provided with this appliance contains material that are hazardous to the environment.

- The battery must be removed from the appliance before it is disposed of.
- The appliance must be disconnected from the supply mains when removing the battery.
- The battery must only be replaced by skilled persons.
- The battery is to be disposed of safely.

DE

SICHERHEITSHINWEISE

Dieses Gerät kann von Kindern ab 8 Jahren sowie von Personen mit eingeschränkten körperlichen, sensorischen oder geistigen Fähigkeiten oder Mangel an Erfahrung und Wissen verwendet werden, wenn sie beaufsichtigt oder in die sichere Verwendung des Geräts eingewiesen wurden und sie die damit verbundenen Gefahren verstehen. Kinder dürfen nicht mit dem Gerät spielen. Reinigung oder Wartung durch den Benutzer dürfen nicht von Kindern ohne Aufsicht durchgeführt werden.

Dieses Gerät darf nur mit dem mitgelieferten Netzteil verwendet werden. Wenn das Netzteil ausgetauscht werden muss, wenden Sie sich bitte an Contura.

INFORMATIONEN ZUR CYBERSICHERHEIT

Beim ersten Einschalten (oder nachdem das Gerät auf die Werkseinstellungen zurückgesetzt wurde), lässt sich das Gerät mithilfe einer Smartphone-App sicher und vereinfacht koppeln und einrichten. Es werden die folgende Schnittstelle sowie nachstehende Services aktiviert:

WLAN-Zugangspunkt

Der WLAN-Zugangspunkt verwendet einen Schutz nach WPA2. Die Zugangsdaten finden Sie auf einem Aufkleber oder auf dem an das Gateway angeschlossenen Gerät. So wird gewährleistet, dass nur befugte Nutzer eine Verbindung mit dem Gerät herstellen können.

Kopplungsservice mittels der App „MyUplink“

Das Gerät bietet Services für die Erkennung und Konfiguration an, sofern es sich im werksseitigen Standardzustand befindet und ordnungsgemäß funktioniert. Die Smartphone-App kommuniziert für die Einrichtungs- und Konfigurationsaufgaben über diese Services mit dem Gerät. Alle sensiblen Daten werden verschlüsselt, sodass Integrität und Datensicherheit gewährleistet bleiben.

Die mit diesem Gerät gelieferte Batterie enthält umweltgefährdende Stoffe.

- Die Batterie muss vor der Entsorgung aus dem Gerät entfernt werden.
- Bei der Entfernung der Batterie muss das Gerät vom Versorgungsnetz getrennt sein.
- Die Batterie darf nur von Fachkräften ausgetauscht werden.
- Die Batterie ist sicher zu entsorgen.

FR

INFORMATIONS DE SÉCURITÉ

Cet appareil peut être utilisé par des enfants âgés de 8 ans et plus ainsi que par personnes présentant des capacités physiques, sensorielles ou mentales réduites ou ayant un manque d'expérience et de connaissances, s'ils sont surveillés ou s'ils ont reçu des instructions sur l'utilisation de l'appareil, en toute sécurité et qu'ils comprennent les risques encourus. Les enfants ne doivent pas jouer avec l'appareil. Le nettoyage et l'entretien par l'utilisateur ne doivent pas être effectués par des enfants sans surveillance.

Cet appareil doit être utilisé uniquement avec le bloc d'alimentation fourni. Si

INFORMATIONS SUR LA CYBERSÉCURITÉ

Lorsque votre appareil est allumé pour la première fois (ou lorsqu'il est configuré sur les paramètres d'usine par défaut), il propose des services destinés à faciliter un appairage et un réglage sécurisés à l'aide d'une application mobile, garantissant à la fois la facilité d'utilisation et la sécurité. L'interface et les services ci-dessous sont activés :

Point d'accès WiFi Le point d'accès

WiFi utilise une protection WPA2. Les identifiants sont imprimés sur une étiquette de l'appareil ou sur l'appareil connecté à la passerelle, et de ce fait seuls les utilisateurs autorisés peuvent se connecter à l'appareil.

Services d'appairage MyUplink App

L'appareil propose des services de découverte et de configuration lorsqu'il est réglé sur les paramètres d'usine par défaut et en fonctionnement normal. L'application mobile communique avec l'appareil par le biais de ces services pour les tâches de réglage et de configuration. Toutes les communications sensibles sont cryptées afin de garantir la confidentialité et l'intégrité des données.

L'alimentation électrique doit être remplacée, veuillez contacter Contura.

La batterie fournie avec cet appareil contient des matériaux dangereux pour l'environnement.

- La batterie doit être retirée de l'appareil avant sa mise au rebut.
- L'appareil doit être débranché du secteur lors du retrait de la batterie.
- La batterie ne doit être remplacée que par des personnes qualifiées.
- La batterie doit être éliminée en toute sécurité.

NL

VEILIGHEIDSGEINFORMATIE

Het product kan worden gebruikt door personen vanaf 8 jaar en personen met een lichamelijke, zintuiglijke of psychologische handicap of gebrek aan ervaring of kennis als ze dit onder toezicht doen of aanwijzingen hebben gekregen voor een veilig gebruik van het product en op de hoogte zijn van de mogelijke risico's. Kinderen moeten onder toezicht worden gehouden zodat ze niet met het product spelen. Laat kinderen het product niet zonder toezicht schoonmaken of onderhouden.

Gebruik het product uitsluitend met de meegeleverde netadapter. Neem contact op met Contura als de netadapter vervangen moet worden.

INFORMATIE OVER CYBERVEILIGHEID

Als u het apparaat voor het eerst inschakelt (of als het apparaat in de fabrieksinstellingen staat), biedt uw apparaat diensten die zijn ontwikkeld om makkelijker op een veilige manier te kunnen koppelen en instellen met behulp van een mobiele app. Op die manier wordt gezorgd voor zowel gebruiksgemak als veiligheid. De volgende interface en diensten zijn ingeschakeld:

Wifi-toegangspunt

Het wifi-toegangspunt maakt gebruik van WPA2-beveiliging waarvoor de inloggegevens zijn afgedrukt op een sticker op het apparaat of op het apparaat dat verbonden is met de gateway. Zo wordt er voor gezorgd dat alleen bevoegde personen verbinding kunnen maken met het apparaat.

Koppeldiensten MyUplink-app

Het apparaat biedt diensten voor detectie en configuratie terwijl het zich in de standaard fabrieksinstellingen bevindt en bij normaal bedrijf. De mobiele app communiceert met het apparaat via deze diensten voor instellings- en configuratietaken. Alle gevoelige informatie is versleuteld om zo te zorgen voor gegevensprivacy en -integriteit.

De batterij die bij het product wordt meegeleverd bevat stoffen die schadelijk zijn voor het milieu.

- De batterij moet worden verwijderd voordat het product wordt afgedankt.
- Schakel het product uit en verwijder de stekker voordat u de batterij verwijderd.
- De batterij mag alleen worden vervangen door personen met voldoende kennis.
- Gebruikte batterijen moet volgens de geldende regels worden weggegooid.

NO

SIKKERHETSGEINFORMATJON

Produktet kan brukes av personer fra 8 år og av personer med nedsatt fysisk, sensorisk eller mental evne eller manglende erfaring eller kunnskap så sant de er under tilsyn eller har fått veiledning om foreliggende risiko. Barn skal holdes under oppsikt for å unngå at de leker med produktet. La ikke barn rengjøre eller vedlikeholde produktet uten overvåking.

Produktet skal bare brukes med medfølgende nettadapter. Kontakt Contura hvis nettadapteren må byttes ut.

INFORMASJON OM CYBERSIKKERHET

Ved første gangs påslåing (eller når enheten er i standard fabrikkmodus) tilbyr enheten din tjenester som skal forenkle sikker paring og oppsett ved hjelp av en app på mobilen, med tanke på enkel bruk og sikkerhet. Følgende grensesnitt og tjenester aktiveres:

WiFi Access Point

WiFi Access Point bruker WPA2-beskyttelse, med informasjon trykt på en etikett på enheten eller på enheten som er koblet til gatewayen. Dette sikrer at bare autoriserte brukere kan koble seg til enheten.

Parings-tjenester med MyUplink-appen

Enheten tilbyr tjenester for detektering og konfigurasjon når den er i standard fabrikkmodus og i normal drift. Mobilappen kommuniserer med enheten via disse tjenestene ved oppsett- og konfigurasjonsoppgaver. All sensitiv kommunikasjon krypteres for å sikre data- og personvern.

Batteriet som følger med dette produktet, inneholder stoffer som er skadelige for miljøet.

- Batteriet skal tas ut før produktet leveres til avfallshåndtering.
- Slå av produktet og trekk ut støpselet før batteriet tas ut.
- Batteriet skal bare byttes av personer med tilstrekkelig kunnskap.
- Uttjente batterier skal avfallshåndteres i henhold til gjeldende regler.

DK

SIKKERHEDSGEINFORMATION

Produktet kan benyttes af personer fra 8 år og af personer med nedsat fysisk, sensorisk eller mentale evner eller manglende erfaring eller viden, hvis de overvåges eller har fået anvisninger vedrørende brugen af produktet på en sikker måde og forstår de pågældende risici. Børn skal holdes under opsyn, så de ikke leger med produktet. Lad ikke børn rengjøre eller vedligeholde produktet uden overvågning.

Benyt kun produktet med den medfølgende netadapter. Kontakt Contura, hvis netadapteren skal udskiftes.

INFORMATION OM CYBERSIKKERHED

Når du tænder enheden første gang (eller når enheden er i fabriksindstillingerne), tilbyder den tjenester, der er designet til at muliggøre sikker paring og opsætning ved hjælp af en mobilapp, hvilket sikrer både brugervenlighed og sikkerhed. Følgende grænseflade og tjenester er aktiveret:

WiFi-adgangspunkt

WiFi-adgangspunktet bruger WPA2-beskyttelse med loginoplysninger, der trykt på et enhedsmærke eller på den enhed, der er tilsluttet gatewayen. Dette sikrer, at kun autoriserede brugere kan oprette forbindelse til enheden.

MyUplink App-parings-tjenester

Enheden viser tjenester til registrering og konfiguration, mens den er i fabriksstand og normal drift. Mobilappen kommunikerer med enheden via disse tjenester i forbindelse med opsætnings- og konfigurationsoppgaver. Al følsom kommunikation er krypteret, hvilket sikrer databeskyttelse og integritet.

Det batteri, som følger med dette produkt, indeholder stoffer som er miljøskeadelige.

- Batteriet skal tages ud, før produktet overdrages til affaldshåndtering.
- Sluk for produktet og træk stikket ud, før batteriet tages ud.
- Batteriet må kun udskiftes af personer med tilstrækkelige kundskaber.
- Udtjente batterier skal affaldshåndteres i overensstemmelse med gældende regler.

FI

TURVALLISUUSTIEDOT

Tätä tuotetta voivat käyttää yli 8-vuotiaat lapset ja henkilöt, joilla on fyysinen tai psyykinen toimintarajoitus tai joilla ei ole kokemusta tai tietoa, edellyttäen, että heitä valvotaan tai opastetaan tuotteen turvallisessa käytössä ja että he ymmärtävät tuotteen käyttöön liittyvät riskit. Huolehdi siitä, että lapset eivät leiki tuotteella. Lapset eivät saa puhdistaa tai huoltaa tuotetta valvomatta.

Käytä tuotetta vain mukana toimitetun muuntajan kanssa. Ota yhteys Conturaan, jos muuntaja on vaihdettava.

KYBERTURVALLISUUTTA KOSKEVAT TIEDOT

Ensimmäisen käynnistyksen yhteydessä (tai kun laite on tehdasasetuksissa), laite tarjoaa palveluita, jotka on suunniteltu helpottamaan turvallista pariliitosta ja asennusta mobiilisovelluksen avulla, varmistaen sekä helpokäyttöisyyden että turvallisuuden. Seuraavat käyttöliittymät ja palvelut ovat käytössä:

WiFi-tukiasema

WiFi-tukiasema käyttää WPA2-suojauksia, ja tunnistetiedot on painettu laitteen tarraan tai yhdyskäytävään liitettyyn laitteeseen. Tämä varmistaa, että vain valtuutetut käyttäjät voivat muodostaa yhteyden laitteeseen.

MyUplink-sovelluksen pariliitospalvelut

Laite asettaa palvelut etsittäviksi ja konfiguroitaviksi tehdasasetusten ja normaalin käytön aikana. Mobiilisovellus kommunikoi laitteen kanssa näiden palveluiden kautta asennus- ja konfigurointitehtäviä varten. Kaikki järkevä tiedonsiirto on salattu, mikä varmistaa tietojen yksityisyyden ja eheyden.

Tämän tuotteen mukana toimitettu akku sisältää ympäristölle haitallisia aineita.

- Akut on poistettava ennen tuotteen hävittämistä.
- Sammuta tuote ja vedä pistotulppa ulos ennen kuin otat akut ulos tuotteesta.
- Akun saa vaihtaa vain henkilö, jolla on riittävä asiantuntemus.
- Käytetyt akut on hävitettävä voimassa olevien määräysten mukaisesti.

Congratulations on purchasing a Contura product!

Warranty Certificate for products manufactured by Contura AB

1. SCOPE

These conditions apply to solid-fuel stoves manufactured by Contura AB and to accessories for these stoves (hereafter called "the Product").

2. QUALITY AND INSTALLATION

The Product conforms to Contura AB's quality standard, certified in accordance with ISO 9001. The installation and functional testing of a product of this type requires technical knowledge and a familiarity with the Product and its function and application. For this reason the Product should be installed and its function tested on site under operational conditions by a qualified professional.

3. CLAIMS

- 3.1 If a defect arising from a fault in the materials or manufacturing process becomes apparent, a claim should be submitted to the company that sold the Product. In such instances the purchaser must be able to authenticate that the Product in question was purchased from the seller and to verify the date on which the purchase was made: the best way to do this is by means of the original purchase receipt. The purchaser must also state the type designation and manufacturing number. This information is displayed on the Product
- 3.2 If the purchaser wishes to make a claim because of a fault or defect, the seller shall be notified within a reasonable period of time, normally within fourteen (14) days from the date on which the fault or defect first became apparent.

4. WARRANTY CONDITIONS

- 4.1 In accordance with these conditions a five-year (5-year) warranty is given, starting from the date of delivery, against defects in materials and manufacturing, with the exception of defects relating to the components described in paragraph 4.4 below and of defects described in paragraph 4.3 below. The term 'date of delivery' is taken to mean that day on which the goods are delivered to the purchaser or to the freight forwarder for onward transport to the purchaser.
- 4.2 In the event of a fault occurring, which is covered by this warranty, upon delivery to the customer or during the warranty period, Contura AB will send the replacement component necessary to rectify the fault, free of charge. Contura AB assumes no other obligation to rectify the fault, for example, for installation of the replacement component.
- 4.3 A warranty of only twelve (12) months is given for components in the fire-box (for example, Hearth cladding, cast iron components, baffles, glass and sealing strips), for cladding and surface finishes (for example, tiles, concrete, glass and lacquered metal), and for electrical components.
- 4.4 The warranty does not extend to defects arising as a result of the fact that
- the installation and operating instructions have not been observed;
 - the assembly work has not been carried out correctly;
 - the Product has been subjected to over-heating caused, for example, by using the wrong type of fuel or excessive amounts of fuel;
 - the Product has been connected to a chimney producing a poor draught; for example, a short chimney or a chimney which is not properly sealed;

- the Product has been stored in a damp, unheated environment;
- the Product has been maltreated and has not been maintained in accordance with the instructions provided;
- the defect is the result of normal wear and tear on components that occasionally need replacement; or
- due to similar circumstances which are not the result of defects in materials or manufacturing.

5. LIMITED LIABILITY

- 5.1 In the event of a defect in the Product the purchaser has no right to any claims other than those described in paragraphs 4.2 above. This means that the purchaser has no right to compensation for direct or indirect damages.
- 5.2 If the services of the seller are used without due and just cause, the purchaser shall bear the costs incurred.
- 5.3 The repair of a defect or the replacement of a component neither extends the validity of the warranty period for the Product, nor indicates the commencement of a new warranty period. Nor are replacement parts covered by any separate warranty period.

6. TRANSPORT DAMAGE

Claims concerning damage which has arisen in connection with the transportation of a Product (transport damage) shall be submitted to the freight forwarder when the Product is delivered to the purchaser or no later than seven (7) days after delivery of the Product.

7. STATUTORY RIGHTS OF THE PURCHASER

When the purchaser is also the end-user or consumer, the purchaser enjoys all the rights accorded by current statutory consumer law in addition to what is stated in this Guarantee Certificate.

8. CONTURA AB

Guarantees availability of all consumable parts for a minimum of 10 years.

9. DISPUTES

The parties concerned shall, in the first instance, endeavour to solve by mutual agreement all disputes relating to the interpretation of these regulations. If no agreement can be reached, the dispute shall be settled in a court of law.



Starting up the stove

When the stove is powered up, the button on the lower door begins to flash dark blue, which changes to a flashing white light after a while. When the start-up sequence is complete, the button lights steadily and the stove is then ready to be used.

If the button flashes green: Ok to start firing, the stove is in battery mode / powercord not connected.

Lighting in the right way

Contura's automatic stove self-adjusts its damper to deliver optimal combustion. It is important to follow these instructions to ensure the optimal performance of the stove.

Your Contura fireplace is intended to be used as a secondary source of heating in your home. It is important that the correct amount of wood is used, especially when lighting the fire. When lighting the fire for the first time, use scales to weigh the wood to see and learn how much 2.0 kg of kindling is. Also check what normal and maximum amounts look like.

The fireplace is designed to be used only with the door closed.

When adding logs, always open the door carefully and slowly to prevent blow back caused by the change in pressure in the fireplace.

The chimney draft and the quality of the wood affect combustion performance.



Output settings

The stove automatically regulates the air supply to match the output setting. To change the output setting, press the button below the door twice, or use the app. Double-press once to show the current mode, double-press again to change mode. See below what each power mode colour means.

Auto (White, can only be selected via the app):

The stove self-regulates the output setting by measuring the room temperature on the rear of the stove.

Low (Yellow):

The stove burns with nominal output and low intensity.

Medium (Orange):

The stove burns with higher output and intensity.

High (Red):

The stove burns with maximum output and intensity.

Recommended size to add
for optimal combustion.



Low:

2 logs, combined
weight of 1 kg



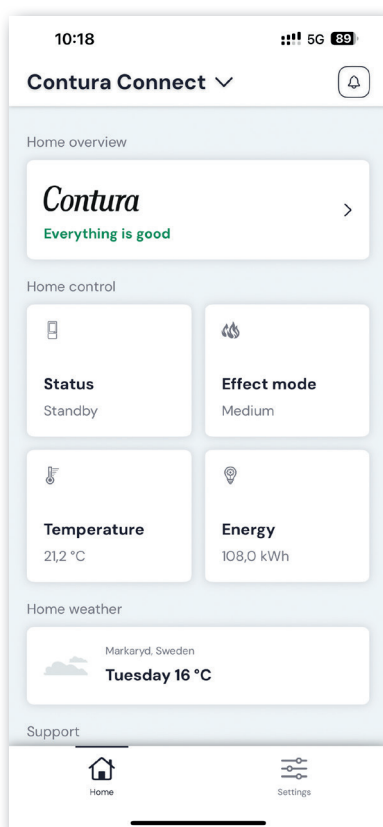
Medium:

2 logs, combined
weight of 1.5 kg



High:

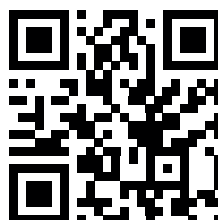
2 logs, combined
weight of 2.5 kg



Download the "myUplink" app



Scan the QR code to see instructions

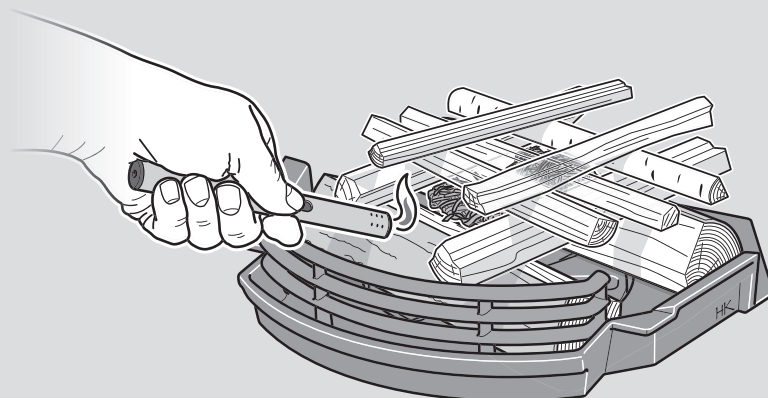


Changes may be made to the
appearance of the app.

Lighting the fire

Note that the correct operating temperature in the firebox will not be reached if too little kindling is used when lighting the fire or if the wood has been cut too thickly. Incorrect lighting can lead to poor combustion with heavy sooting or the fire may go out.

If the fireplace is not connected to outdoor air, it may be necessary to open a window close to the fireplace before it is lit. Leave the window open for a few minutes until the fire is burning well.



Kindling:

Finely chopped wood

Length: 25-33 cm

Diameter: 2-5 cm

Weight per lighting: approx. 2.0 kg, 7-9 pieces with the largest ones placed at the bottom.

1. Place about 2 kg of kindling in the fireplace with the largest pieces at the bottom and a firelighter as illustrated.
2. Light the fire.
3. Close the door.
4. The LED ring on the stove indicates when it is time to add more wood. You can also set the app to notify you.

Power cut

In the event of a power cut, the damper will open when the door is opened, provided that the battery is in good condition. The damper will not be regulated but will be in a mode that allows a fire to be lit and kept going. If you are finding it difficult to get a fire started, you can leave the door open for a while until the wood catches fire. When the power returns, the damper will be calibrated and automatic regulation begins.

Adding logs

1. Open the door a few centimetres and allow the negative pressure inside to level out for a few seconds before fully opening the door.
2. Add 2 logs with a combined weight of 1 to 2.5 kg. Place one log diagonally across the other as illustrated.
3. The declared performance of 5 kW and the cleanest combustion are achieved when the power mode is set to "Low" and two logs measuring 25 cm and with a combined weight of 1.2 kg are added when the stove indicates that this is required.
4. Close the door.

Firewood:

Chopped wood

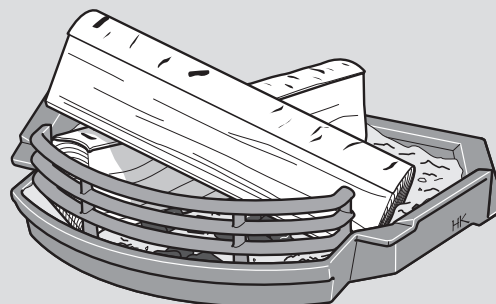
Length: 25-33 cm

Diameter: 7-9 cm

Normal amount: 1.5 kg/load (2 logs)

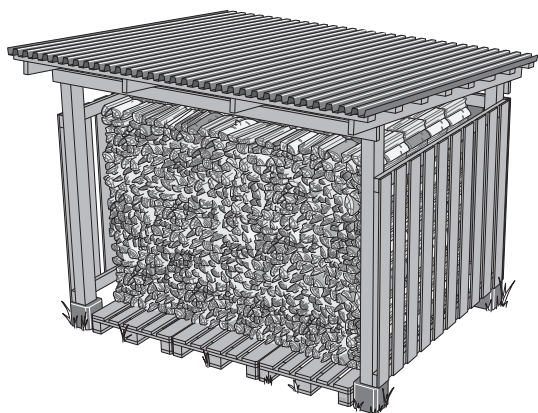
Max. amount: 2.5 kg/load (max. 2 logs per load)

Burn time approx. 40-50 min per load



Choice of fuel

All types of wood, such as birch, beech, oak, elm, ash, softwoods and wood from fruit trees can be used as fuel in the fireplace. Different species have different densities. The denser the wood, the higher the energy content. Beech, oak and birch have the highest density.



NEVER burn the following

Under no circumstances may fossil fuels, pressure impregnated wood, painted or glued wood, chipboard, plastic or colour brochures be used as fuel. When burned, all of these materials release substances that are hazardous to the environment and may damage your fireplace. Nor should extremely finely chopped wood be burned, except for kindling, as it burns out of control. This type of fuel can easily cause a flashover resulting in temperatures that are too high.

Moisture content

About 50% of the weight of fresh wood is water. Wood should always be left to dry until the moisture content is below 20%. If wood with a higher moisture content is used as fuel, a great deal of its energy is used to boil away the water. Damp wood also results in poor combustion performance. Soot and tar form inside the chimney and in worst cases these deposits can cause a chimney to catch fire. In addition, it causes soot to form on the glass of the stove and the smoke may be a nuisance to neighbours. To ensure that your firewood is dry, the wood should be cut in the winter and stored during the summer in a well-ventilated space under a roof. Never cover the woodpile with a tarpaulin all the way to the ground as this seals in the moisture and prevents the wood from drying. Always keep some logs indoors for a few days before you use them to give any surface moisture time to evaporate.

Avoid using large amounts of very finely chopped wood, pieces of bark, sawdust, chips and other wood waste. These can start to burn out of control and cause sudden ignition that might, in worst cases, damage the stove and building.

Candles

Do not use old candle stubs as fuel. Melted wax runs down into the damper system and renders it unusable. This is very expensive to repair.

Lighting for the first time

A brand new fireplace may give off a somewhat unusual smell the first few times it is used. This smell will disappear completely after it has been used several times.

The button's colours

When the stove is not in operation

Steady white light:

The stove is in standby.

Steady green light:

The light turns green when the door is opened to confirm lighting mode. The light goes out or turns white when the stove exits lighting mode, depending on the setting in the app.

Flashing orange light:

Ash-pan is full and need to be emptied. Confirm action by pressing the button. Reset is confirmed by green LED flash.

Flashing red light:

Something is wrong. Do NOT light the stove! Read in the app for more information.

When the stove is in operation

Flashing white light:

Time to insert new load. The lamp goes out when the door is opened.

Steady orange light:

Over-temperature. The stove regulates the temperature automatically. NOTE: No action required! The lamp goes out when normal temperature is reached. Read through the lighting instructions to light the stove correctly.

Updating software

Rapidly flashing blue light:

Press the button to start updating.

Slowly flashing blue light:

Updating in progress.

Steady white light:

Updating complete.

Additional colours may occur, and explanations for these can be found in the app under "Help".

STOVE MAINTENANCE

Soot may form on the glass even when dry wood with a moisture content of 15-20% is used. If you clean the glass regularly, it is usually sufficient to wipe it off with damp paper. If the soot has been on the glass for a long time, dip the paper in the ashes. Ashes and water will remove the soot. This is the only cleaning method we recommend. Detergents and special soot removes/fireplace glass cleaner are available from supermarkets, DIY shops and local stove dealer, we do not recommend these. Never use cleaning agents that contain abrasives or that have a corrosive effect on printed or painted glass. These may damage the glass/paintwork. Never use cleaning agents that contain sodium hydroxide, these have a corrosive effect on sealing strips.

When emptying the ash-pan, make sure there are no live embers in the ashes. The ash must be stored in a fireproof container with a lid for at least one week before being disposed of.

Also clean inside the area where the ash-pan is located to remove any spilled ash that might otherwise prevent correct insertion of the pan.

Use a wire brush to clean the grate and other cast-iron components in the firebox.

It is important to inspect gaskets. Worn gaskets reduce combustion efficiency because the stove draws additional air.

Paintwork on the stove can be cleaned using a damp cloth and, if necessary, a few drops of washing-up liquid. Scratches on painted surfaces can be repaired using Contura touch-up paint. Contact your dealer.

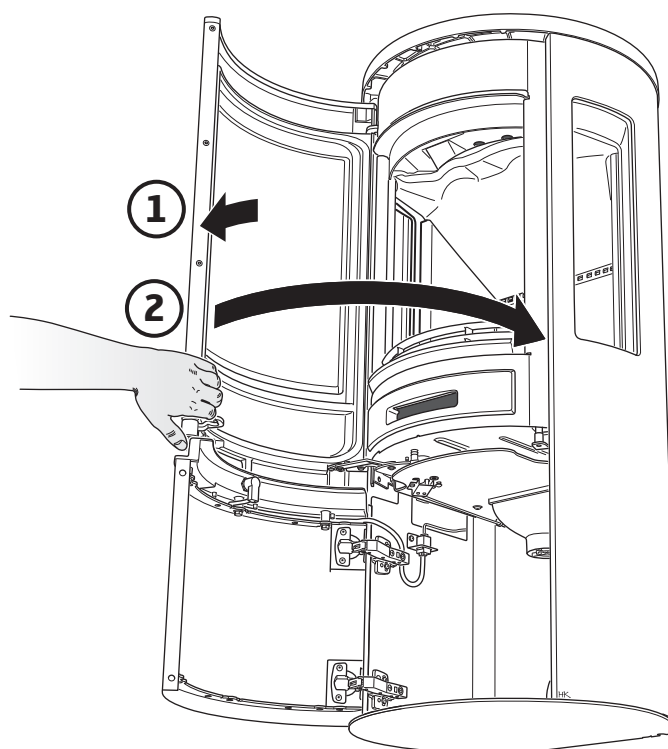
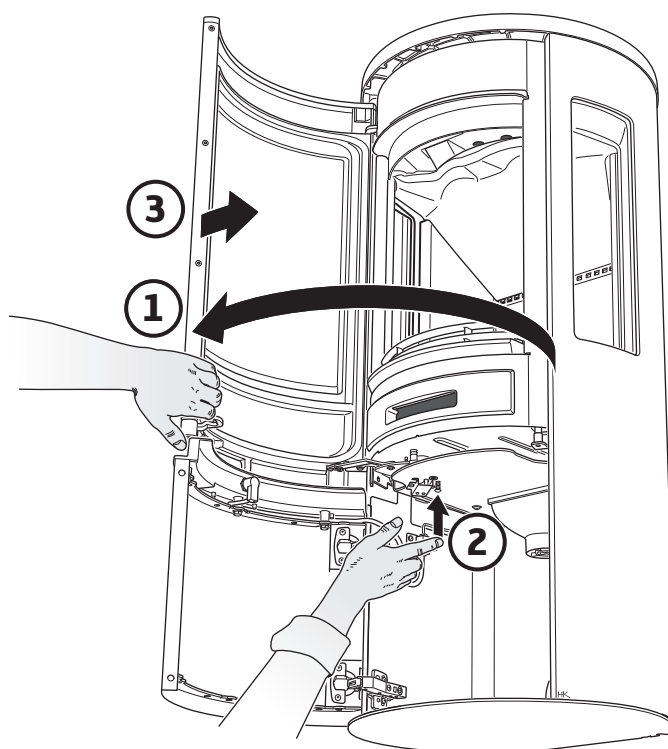
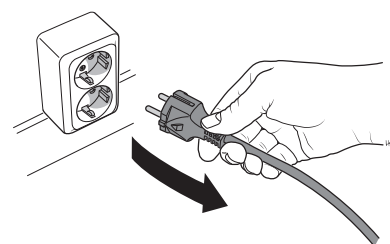
The constant flow of air through the stove, as cold air is drawn in from the room and hot air is released, can cause dust to collect behind and under the stove. These places should therefore be cleaned regularly.

Parts located near the actual seat of the fire may require replacing. The hearth cladding and grate are two such parts. The useful life of these parts depends on how, and how much, the stove has been used.

Only use replacement parts recommended by Contura.

Door in open position, for cleaning / service

The door can be kept in the open position using the push button on the underside of the stove. Unplug the stove before service / cleaning.



UK Smoke control areas

The Contura Connect 500 series, 5 kW woodburning stoves listed below have been recommended as suitable for use in smoke control areas when burning wood logs and operated in accordance with these instructions. No modification on the stove is needed.

Contura Connect 510

Contura Connect 556

Contura Connect 596

THE CLEAN AIR ACT 1993 AND SMOKE CONTROL AREAS

Under the Clean Air Act local authorities may declare the whole or part of the district of the authority to be a smoke control area. It is an offence to emit smoke from a chimney of a building, from a furnace or from any fixed boiler if located in a designated smoke control area. It is also an offence to acquire an "unauthorised fuel" for use within a smoke control area unless it is used in an "exempt" appliance ("exempted" from the controls which generally apply in the smoke control area). The Contura i1, 110 and 130 has been recommended as suitable for use in smoke control areas when burning wood logs. They all must be fitted with a permanent stop to prevent closure of the air apertures beyond 14.5 mm and 5.6 mm open, this equals to 40 % opening of the air control vent.

In England appliances are exempted by publication on a list by the Secretary of State in accordance with changes made to sections 20 and 21 of the Clean Air Act 1993 by section 15 of the Deregulation Act 2015.

In Scotland appliances are exempted by publication on a list by Scottish

Ministers under section 50 of the Regulatory Reform (Scotland) Act 2014. Similarly, in Northern Ireland appliances are exempted by publication on a list by the Department of Agriculture, Environment and Rural Affairs under Section 16 of the Environmental Better Regulation Act (Northern Ireland) 2016. In Wales appliances are exempted by regulations made by Welsh Ministers.

Further information on the requirements of the Clean Air Act can be found here: <https://www.gov.uk/smoke-control-area-rules>

Your local authority is responsible for implementing the Clean Air Act 1993 including designation and supervision of smoke control areas and you can contact them for details of Clean Air Act requirements.

USER OPERATING INSTRUCTIONS

Please read these important notices before referring to the main instruction for detailed operating instructions.

Stove performance

Refer to the main instruction manual for details of the stove's performance.

Recommended fuels:

The stoves have a refuelling interval of 0.75h to achieve the nominal rated output. Wood logs should be seasoned with a moisture content of around 20%.

Refuelling on to a low fire bed:

If there is insufficient burning material in the firebed to light a new fuel charge, excessive smoke emission can occur. Refuelling must be carried out onto a sufficient quantity of glowing embers and ash that the new fuel charge will ignite in a reasonable period. If there are too few embers in the fire bed, add suitable kindling to prevent excessive smoke.

Fuel overloading:

The maximum amount of fuel specified in this manual should not be exceeded, overloading can cause excess smoke.

Operation with door left open:

Operation with the door open can cause excess smoke. The appliance must not be operated with the appliance door left open except as directed in the instructions.

Dampers left open

Operation with the air control or appliance dampers open can cause excess smoke. The appliance must not be operated with air controls, appliance dampers or door left open except as directed in the instructions.

HEALTH AND SAFETY PRECAUTIONS

Special care must be taken when installing the stove such that the requirements of the Health and Safety at Work Act are met.

Handling

Adequate facilities must be available for loading, unloading and site handling.

Fire Cement

Some types of fire cement are caustic and should not be allowed to come into contact with the skin. In case of contact wash immediately with plenty of water.

Asbestos

This stove contains no asbestos. If there is a possibility of disturbing any asbestos in the course of installation then please seek specialist guidance and use appropriate protective equipment.

Metal Parts

When installing or servicing this stove care should be taken to avoid the possibility of personal injury.

IMPORTANT WARNING

This stove must not be installed into a chimney that serves any other heating appliance.

There must not be an extractor fan fitted in the same room as the stove as this can cause the stove to emit fumes into the room.

Properly installed, operated and maintained this stove will not emit fumes into the dwelling. Occasional fumes from de ashing and re fuelling may occur. However, persistent fume emission is potentially dangerous and must not be tolerated. If fume emission does persist, then the following immediate action should be taken:

- (a) Open doors and windows to ventilate the room and then leave the premises.
- (b) Let the fire go out.
- (c) Check for flue or chimney blockage and clean if required.
- (d) Do not attempt to relight the fire until the cause of the fume emission has been identified and corrected.
If necessary seek expert advice.

The most common cause of fume emission is flueway or chimney blockage. For your own safety these must be kept clean at all times.

PREPARATORY WORK AND SAFETY CHECKS

Chimney

In order for the stove to perform satisfactorily the chimney height must be sufficient to ensure an adequate draught of approximately 15 Pa so as to clear the products of combustion and prevent smoke problems into the room.

NOTE: A chimney height of not less than 4.5 metres measured vertically from the outlet of the stove to the top of the chimney should be satisfactory. Alternatively the calculation procedure given in EN 13384-1 may be used as the basis for deciding whether a particular chimney design will provide sufficient draught. BS EN 15287-1:2007 gives additional details.

The outlet from the chimney should be above the roof of the building in accordance with the provisions of Building Regulations Approved Document J.

If installation is into an existing chimney then it must be sound and have no cracks or other faults which might allow fumes into the house. Older properties, especially, may have chimney faults or the cross section may be too large i.e. more than 230 mm x 230 mm. Remedial action should be taken, if required, seeking expert advice, if necessary. If it is found necessary to line the chimney then a flue liner suitable for solid fuel must be used in accordance with Building Regulations Approved Document J.

Any existing chimney must be clear of obstruction and have been swept clean immediately before installation of the stove. If the stove is fitted in place of an open fire then the chimney should be swept one month after installation to clear any soot falls which may have occurred due to the difference in combustion between the stove and the open fire.

If there is no existing chimney then any new system must be to the designation described above and in accordance with Building Regulations Approved Document J.

A single wall metal fluepipe is suitable for connecting the stove to the chimney but is not suitable for use as the complete chimney. The chimney and connecting fluepipe must have a minimum diameter of 125 mm and its dimension should be not less than the size of the outlet socket of the stove.

Any bend in the chimney or connecting fluepipe should not exceed 45°. 90° bends should not be used.

Combustible material should not be located where the heat dissipating through the walls of fireplaces or flues could ignite it. Therefore when installing the stove in the presence of combustible materials due account must be taken of the guidance on the separation of combustible material given in Building Regulations Approved Document J and also in these stove instructions.

If it is found that there is excessive draught in the chimney then a draught stabiliser should be fitted. Fitting of a draught stabiliser will affect the requirement for the permanent air supply into the room in which the stove is fitted in accordance with Approved Document J (see also combustion air supply).

Adequate provision e.g. easily accessible soot door or doors must be provided for sweeping the chimney and connecting fluepipe where it is not intended for the chimney to be swept through the appliance.

Hearth

The hearth should be level and able to accommodate the weight of the stove and its chimney if the chimney is not independently supported. The weight of the stove is indicated in the brochure.

The stove should preferably be installed on a non-combustible hearth of a size and construction that is in accordance with the provisions of the current Building Regulations Approved Document J.

The clearance distances to combustible material beneath, surrounding or upon the hearth and walls adjacent to the hearth should comply with the guidance on the separation of combustible material given in Building Regulations Approved Document J and also in these stove instructions.

If the stove is to be installed on a combustible floor surface, it must be covered with a non-combustible material at least 12 mm thick, in accordance with Building Regulations Approved Document J, to a distance of 30 cm in front of the stove and 15 cm to each side measuring from the door of the combustion chamber.

Combustion air supply

In order for the stove to perform efficiently and safely there must be an adequate air supply into the room in which the stove is installed to provide combustion air. The provision of air supply to the stove must be in accordance with current Building Regulations Approved Document J. Special attention should be taken in newer build properties where the design air permeability is less than $5\text{m}^3/\text{h.m}^2$. Approved Document J gives more information on this. An opening window is not appropriate for this purpose.

The fitting of an external air kit direct to outside air must not be considered substitute for installing the appliance with a permanently open air vent in compliance with ventilation requirements stated in Approved Document J. Please reference ADJ for further guidance.

Connection to chimney

Stoves may have a choice of either a rear or top flue gas connector that allows connection to either a masonry chimney or a prefabricated factory made insulated metal chimney in accordance with their instructions. In some cases it may be necessary to fit an adaptor to increase the diameter of the flue to the minimum required 125 mm section of the chimney or liner. All joints in the connection between the stove and the chimney must be made gastight using fire cement and where necessary fire-proof rope infill. Means should be made for sweeping the entire length of the flue, be that through the appliance or by suitable sweeping hatch in the flue.

Commissioning and handover

Ensure all parts are fitted in accordance with the instructions.

On completion of the installation allow a suitable period of time for any fire cement and mortar to dry out, before lighting the stove. Once the stove is under fire check all seals for soundness and check that the flue is functioning correctly and that all products of combustion are vented safely to atmosphere via the chimney terminal.

On completion of the installation and commissioning ensure that the operating instructions for the stove are left with the customer. Ensure to advise the customer on the correct use of the appliance and warn them to use only the recommended fuel for the stove.

Advise the user what to do should smoke or fumes be emitted from the stove. The customer should be warned to use a fireguard to BS 8423:2002 (Replaces BS 6539) in the presence of children, aged and/or infirm persons.

IMPORTANT NOTES

General

Before lighting the stove check with the installer that the installation work and commissioning checks described above have been carried out correctly and that the chimney has been swept clean, is sound and free from any obstructions. As part of the stoves' commissioning and handover the installer should have shown you how to operate the stove correctly.

CO Alarm

Your installer should have fitted a CO alarm in the same room as the appliance. If the alarm sounds unexpectedly, follow the instructions given under "Warning Note" above.

Air Controls

Manually operated air control can be managed by adjusting the air control valve to increase/decrease the air flow to the stove.

Use of fireguard

When using the stove in situations where children, aged and/or infirm persons are present a fireguard must be used to prevent accidental contact with the stove. The fireguard should be manufactured in accordance with BS 8423:2002.

Chimney cleaning

The chimney should be swept at least twice a year. It is important that the flue connection and chimney are swept prior to lighting up after a prolonged shutdown period.

If the stove is fitted in place of an open fire then the chimney will require sweeping after a month of continuous operation. This is a precaution to ensure that any "softer" deposits left from the open fire usage have not been loosened by the higher flue temperatures generated by the closed stove.

In situations where it is not possible to sweep through the stove the installer will have provided alternative means, such as a soot door. After sweeping the chimney the stove flue outlet and the flue pipe connecting the stove to the chimney must be cleaned with a flue brush.

Periods of Prolonged Non-Use

If the stove is to be left unused for a prolonged period of time then it should be given a thorough clean to remove ash and unburned fuel residues. To enable a good flow of air through the appliance to reduce condensation and subsequent damage, leave the air controls fully open.

Extractor fan

There must not be an extractor fan fitted in the same room as the stove as this can cause the stove to emit smoke and fumes into the room.

Aerosol sprays

Do not use an aerosol spray on or near the stove when it is alight.

Use of operating tools

Always use the operating tools provided when handling parts likely to be hot when the stove is in use.

Chimney Fires

If the chimney is thoroughly and regularly swept, chimney fires should not occur. However, if a chimney fire does occur turn off the stove immediately and isolate the mains electricity supply (if applicable), and tightly close the doors of the stove. This should cause the chimney fire to go out. If the chimney fire does not go out when the above action is taken then the fire brigade should be called immediately. Do not relight the stove until the chimney and flueway have been cleaned and examined by a professional.

Permanent air vent

The stove requires a permanent and adequate air supply in order for it to operate safely and efficiently. In accordance with current Building Regulations the installer may have fitted a permanent air supply vent into the room in which the stove is installed to provide combustion air. This air vent should not under any circumstances be shut off or sealed.

Possible causes of malfunctions and how to rectify them

A poor draft in a newly-installed fireplace

- Check that the dimensions of the chimney correspond to what is stated in the installation instructions.
- Check that there are no obstructions in the chimney and that no nearby buildings or trees affect the wind around the chimney.

It is difficult to light the fire and the fire dies after a short time

- Check that the wood is sufficiently dry.
- Too much negative pressure in the house, for example, when using a kitchen extractor fan or other mechanical ventilation. Open a window near the fireplace when lighting the fire. Also try lighting some newspaper and holding it up inside the firebox to get the draft going.
- The supply air duct from outdoors may be partially or totally blocked. Disconnect the hose and try lighting a fire with combustion air from the room.
- The smoke outlet of the stove may be blocked with soot, which can occur after sweeping. Lift the smoke baffle out and check for soot.
- Finally, read through the instructions for use again. The amount of firewood may have been insufficient to produce enough embers for the next load of logs to catch fire.

Noises from the stove

A buzzing may be heard when the stove door is opened more than 24 hours after the last fire, or when the stove is first powered up. The stove may be performing a self-test and the damper motors are being tested in a special operating mode. No noises should be heard from the stove during normal regulation when the stove is in use.

Information in the app

The app automatically sends out information and tips. FAQ about the app can be found under "Help".

Ash behind glass side panels

If the door is opened carelessly when adding logs, small particles of airborne ash can escape from the stove. In unfavourable circumstances, these particles can end up between the glass panels in those models that have sidelights. In order to remove the ash, you can blow clean with compressed air or vacuum using a vacuum cleaner with a thin nozzle. However, the easiest method is to use "compressed air in a can" (as pictured). Spray cans holding compressed air can be purchased from retail outlets.

Excessive amounts of soot on the glass

There is always some soot on the glass and this will increase each time the stove is used. Soot on the glass is mainly caused by:

- Damp wood, which results in poor combustion performance and a lot of smoke.
- The temperature in the firebox is too low, causing incomplete combustion and poor draft in the chimney.
- The fire has not been started according to instructions.

Occasional smell of smoke around the fireplace

This can occur when wind blows down the chimney and most often occurs when the wind is from a particular direction. Another reason could be that the door was opened when the fire was burning briskly.

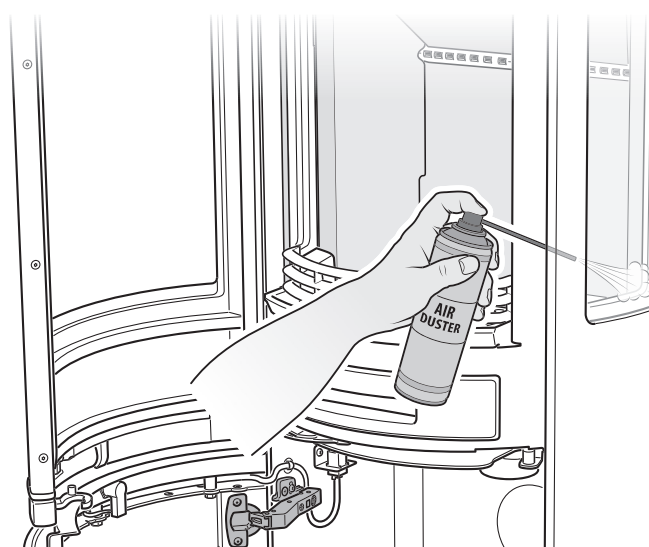
Painted parts have become discoloured

Painted parts become discoloured when the temperature in the firebox is too high. The temperature may be too high because more than the maximum amount of wood has been added or inappropriate fuel has been used (e.g. building waste, large quantities of finely chopped pieces). The warranty does not cover damage of this type. If a problem occurs that you cannot rectify yourself, contact the dealer or a chimney sweep.

Firewood is burning too intensively at the "Low" output setting

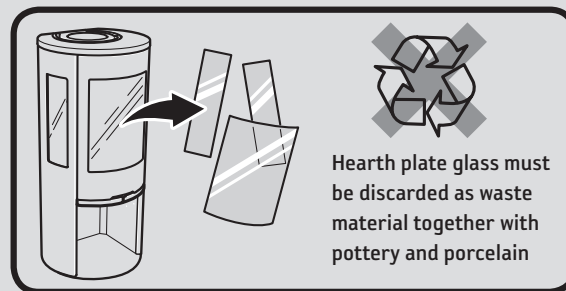
If firewood is burning fiercely even at the lowest output setting, the draft in the flue may be too strong. A strong draft is often produced if the flue is long or when a chimney fan is rotating too quickly. Contact your local dealer to solve this issue.

Burning too dry wood can also contribute to the fire burning too intensively.



Waste management

The stove packaging is cardboard, wood and a small amount of plastic. The stove contains a rechargeable battery and electrical components which must be sorted and recycled.



Demolition and disposal

The demolition and disposal of the appliance are the sole liability and responsibility of the owner who must act in compliance with the laws in force in their country regarding safety, respect and protection of the environment.

Leave the disposal of the packaging to the installer who installed the product or to special waste stations.

Do not dispose of used products with normal household waste. It must be disposed of at a special waste station or dealer who provides this type of service.

Always follow the regulations in force in the Country where the appliance is in operation for the disposal of materials and possibly for the disposal notification.

The differentiated disposal of the product makes it possible to avoid potentially negative consequences on the environment and health, and also allows recycling of the materials making up the product in order to achieve significant energy and resource savings.



All disassembly operations for demolition must take place with the appliance stopped and without the power supply.

Any liability for damage to people and animals always falls on the owner. Upon demolition, the EC marking, this manual and other documents relating to this appliance must be destroyed.

- Remove all the electrical equipment.
- Separate the battery on the electronic boards.
- Scrap the structure of the appliance using authorised companies.

The crossed-out wheeled bin symbol that appears on the label of the appliance indicates that, at the end of its useful life, the product must be disposed of separately from other waste.

Improper disposal of the product by the user results in administrative penalties in accordance with current legislation.



Leaving the appliance in accessible areas is a serious danger to people and animals.



- When the fireplace is in use, its surfaces become very hot and can cause burns if touched.
- You should also be careful of the powerful heat that transfers through the door glass.
- Combustible materials must be kept at the stated safe distance to prevent the risk of fire.
- A smouldering fire emits gases that can suddenly ignite and cause material damage and personal injury.
- The ash-pan must be emptied when it is full. If this is not done, the air supply can become blocked, resulting in poor performance. If the pan is not emptied, ash can find its way out through the damper.
- The stove must not be modified by any unauthorised person.



SWEEPING

The flues and chimney connections should be swept by a professional chimney sweep. The stove can be swept by scraping and/or brushing. A soot vacuum cleaner is most appropriate however. Should the chimney catch fire, the stove must be set to low output setting to reduce the supply of air to the stove and chimney. If necessary, contact the fire brigade to extinguish it. The chimney must always be inspected by a chimney sweep after a chimney fire.

ID Wifi-module

- Attach sticker from WiFi modul here
- Liitä Wifi-moduulin tarra tähän

811603 BAV SE-EX Contura Connect 500-1
2025-09-09

Contura
Contura AB Box 134 SE-285 23 Markaryd Sweden
contura.eu